



G010989

System: CCP, CS3000*, CS4000, NSAC-1

Manual Call Point IP66/67

CD-MCP WP Ex ia

Part no. 5101083-00A

General Description

CD-MCP WP Ex ia is an intrinsically safe addressable manual call point within the NS-range that can be connected to fire alarm systems as specified above*.

* System CS3000: SPK-2 for NOSE based detectors.

CD-MCP WP Ex ia is connected to the detector loop via ISOLATOR-A. Up to 20 addressable IS units can be connected to an ISOLATOR-A.

Pressing the glass causing it to crack activates the fire alarm. The call point can also be tested with a special key, included in the delivery.

A red LED on the front of the call point indicates the fire alarm. The LED remains lit until the glass has been replaced and the fire alarm has been reset on the control panel.

The address of the call point is set with a DIP-switch.



NOTE!

Potential electrostatic charging risk!

- Do not clean with solvents.
- Clean with a damp cloth.

Local intelligence via an integrated CPU

The integrated CPU makes it possible to make decisions locally, like evaluation of the alarm condition.

Data

Sensor method	Glass break
Sensor element	Limit switch
Operating voltage	16–28 VDC
Operating current:	
- Normal condition	0,1 mA ± 5%
- Alarm condition with LED activated	1,6 mA ± 5%
Loop communication protocol	IDAnx
Cable dimension	M20 ø 6–12 mm Material: Black polyamide
Cable terminals	2,5 mm ²
Operating temperature	-40 °C to +70 °C
Storage temperature	-50 °C to +70 °C
Relative humidity	≤ 95 % RH non-condensing
Addressing method	DIP switch
Ingress protection	IP66/67
Material	PC/ABS
Weight	250 g ± 5%
Colour	Red (RAL 3001)
Loop cable requirement	See the Installation & Commissioning manual
Certified according to	EN 54-11



2531/yyyy
yyyy = year of production


CE 0470, 2531

Accessories

Protection lid, transparent	5200232-00
Adapter plate	5200206-00

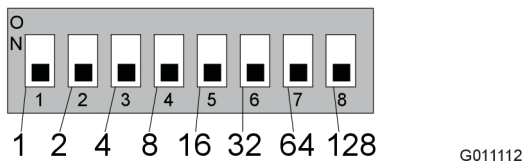
Spare glass, GB (10 pcs.)	5200075-00A
Spare glass, no text (10 pcs.)	5200077-00A
Resettable element	5200144-00A
Test key (10 pcs.)	N1394

Safety Data

IMQ 16 ATEX 018 X	 II 1G
IECEx IMQ 16.0012X	Ex ia IIC T5 Ga -40 °C < Ta < +70 °C
Maximum voltage (U _i)	28 V
Maximum current (I _i)	93 mA
Internal capacitance (C _i)	532 pF
Internal inductance (L _i)	Negligible
Maximum power (P _i)	0.653 W

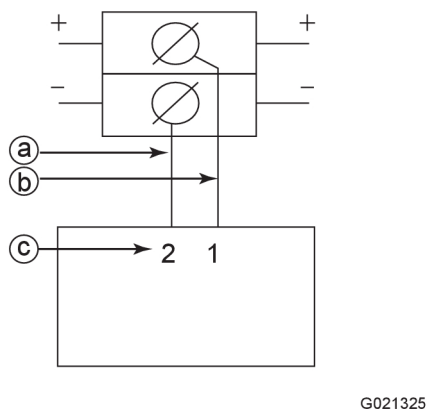
Address switch

The loop units are identified by a physical address. The address number is set on an 8 pole DIP switch located on the loop unit. (For settings use a pointed tool of suitable size.)



1 to 254 are valid addresses. The DIP switch value follows the binary system.

Connection



- a) Black (-)
- b) Red (+)
- c) Call points circuits

NOTE!
When used as a spare part for NS-ACP-IS WP
To use the existing mounting holes, please use 5200206-00 ADAPTER PLATE MCP

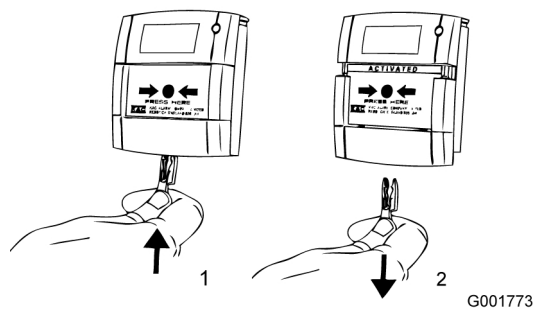
NOTE!
When used in a hazardous area the loop unit must be connected to an ISOLATOR-A. Refer to the N1790 ISOLATOR-A sheet for connection examples.

Cleaning

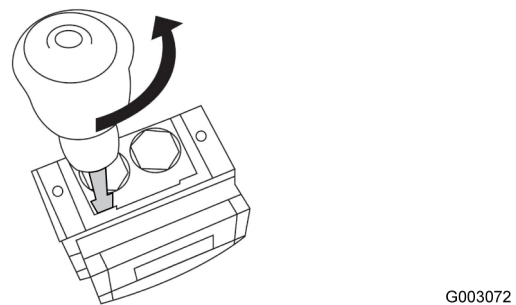
WARNING!
Potential electrostatic charging hazard
If the unit requires cleaning, only clean exterior with a damp cloth to avoid electrostatic charge build up.

Testing & Maintenance

The call point can be tested with a special key, included in the delivery.

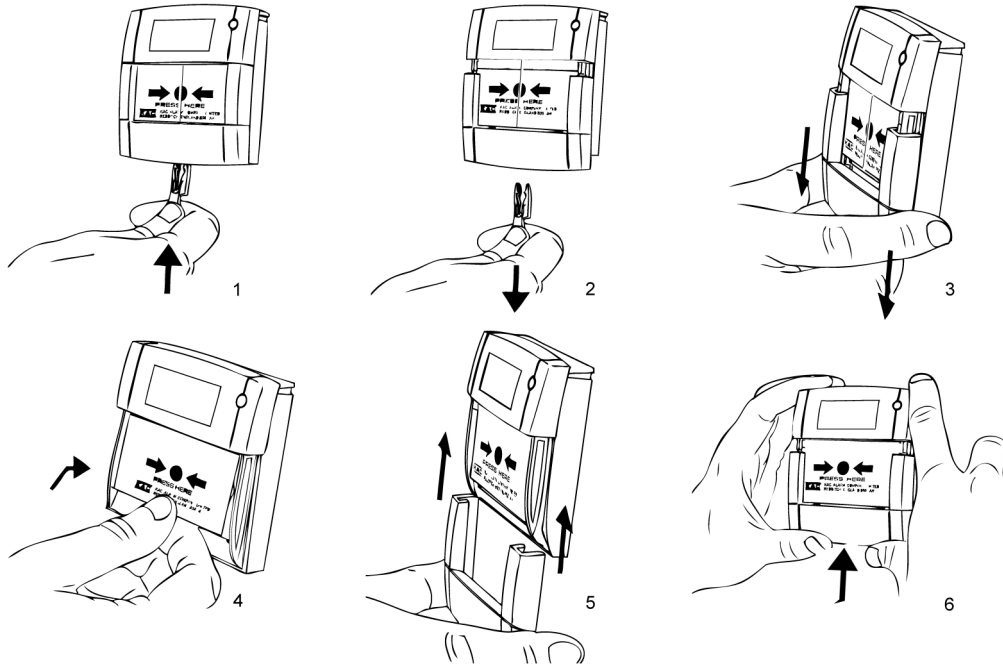


Cover removal



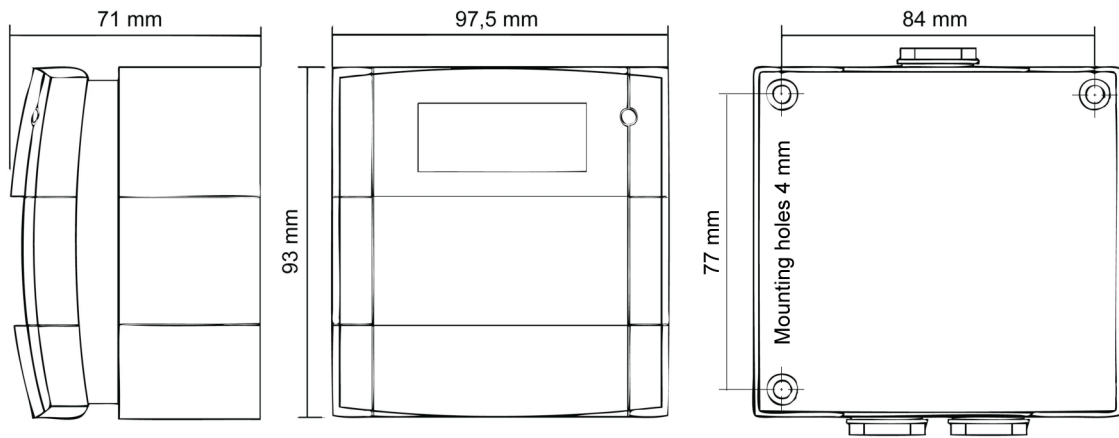
1. Remove the four cover fixing screws.
2. Place the edge of a large flat bladed screwdriver into the slot between the cover and back box, as shown in picture, and gently twist until the latches are disengaged.
3. Pull cover away from the back box.

Replace glass



G001779

Dimensions (mm)



G001782

